

FAN GUIDE

ORLEN WARSAW FIM SPEEDWAY GRAND PRIX OF POLAND

(ver. 14.05.2022)

- When and where will the ORLEN Warsaw FIM Speedway Grand Prix of Poland be organized?

ORLEN Warsaw FIM Speedway Grand Prix of Poland will be held on 14th of May at 7 pm at the PGE Narodowy in Warsaw. The gates will be open at 5 pm. To get more information about the stadium please visit www.pgenarodowy.pl. Official website of the event: www.sgpnarodowy.pl.

- What does the agenda of the event include?

13.05.2022 (Friday): **training day/ qualification before ORLEN Warsaw FIM** **SGP of Poland**

- 4:00 pm - open entrance for fans, gate number 2
- 5:00 pm - speedway training/ riders qualification
- 6.15 pm – the end of the speedway training/ riders qualification
- official event's programme is an entrance ticket to the training, zone D12/13, gate number 2. There will be limited number of places (max 999).



PROGRAMME SALE for ORLEN Warsaw FIM Speedway Grand Prix of Poland will be conducted on Friday (**13.05**) by the Sale Point in the front of the gate number 2 at the PGE Narodowy. Programme price: 20 PLN.

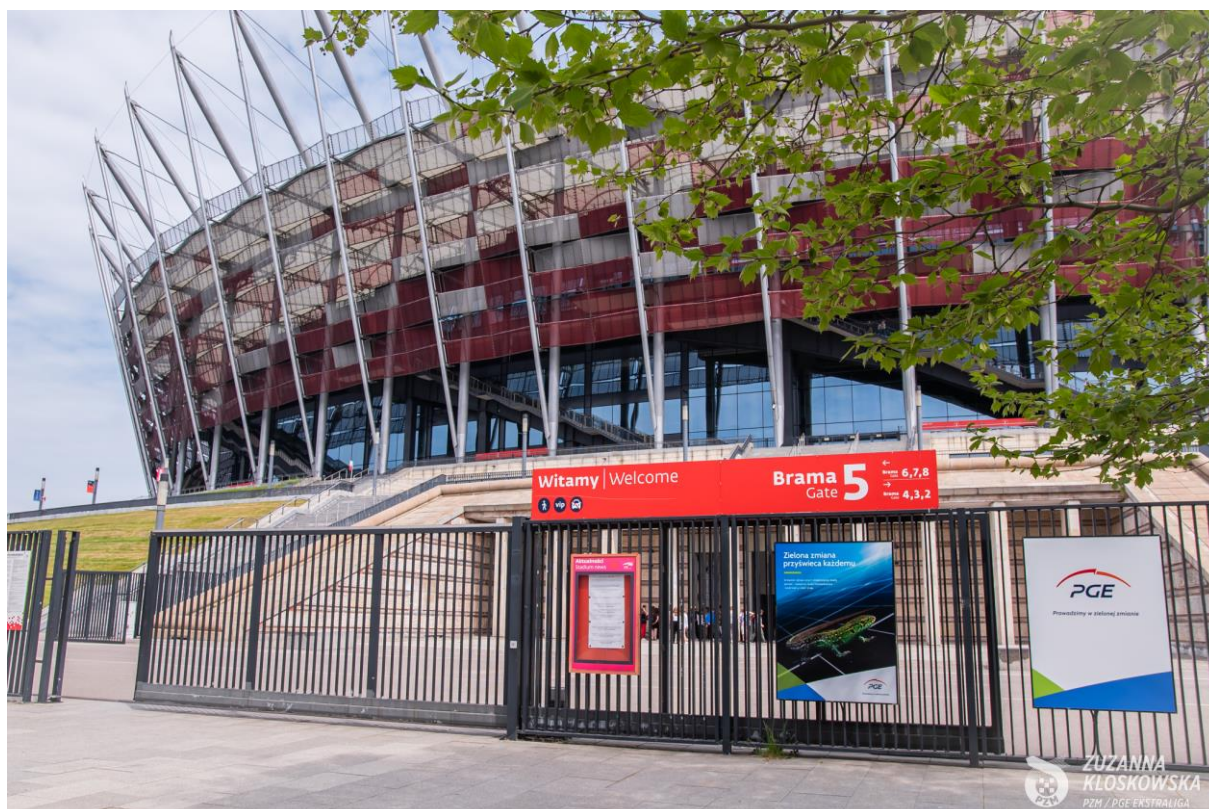
EXCHANGE VOUCHER TO PROGRAMME ORLEN Warsaw FIM Speedway Grand Prix of Poland will be possible on Friday (**13.05**) at the Sale Point in the front of the gate number 2 at the PGE Narodowy.

TICKET SALE for ORLEN Warsaw FIM Speedway Grand Prix of Poland will be conducted on Friday (**13.05**) by the Sale Point in the front of the gate number 2 at the PGE Narodowy.

SALE POINT in the front of the gate number 2 at the PGE Narodowy on Friday (**13.05**) will be open from **1:00 pm** to **8:00 pm**.

14.05.2022 (Saturday): **day of the ORLEN Warsaw FIM SGP of Poland**

- 5 pm - opening PGE Narodowy gates
- Entrance for fans on the PGE Narodowy: gates number 2, 3, 10 and 11
gate number 1: VIP Silver tickets (zones: C2 and C3), East boxes
gate number 5: VIP Gold tickets (zones: V1, V2, V3, V4, V5), West boxes
gate number 4: entry only for persons with entry cards (only with valid VIP Gold/Silver ticket, level -3) and persons with disabilities who have entry cards (available for purchase at www.kupbilet.pl/sgp2020)



- 6:48 pm - rider's presentation
- 7:04 pm - start of the first race of the tournament
- Around 10:00 pm - the end of the ORLEN Warsaw FIM SGP of Poland

PROGRAMME SALE for ORLEN Warsaw FIM Speedway Grand Prix of Poland will be conducted on Saturday (**14.05**) by the Sale Points behind the gates number 2 and 11 at the PGE Narodowy. Programme price: 20 PLN.

EXCHANGE VOUCHER TO PROGRAMME ORLEN Warsaw FIM Speedway Grand Prix of Poland will be possible on Saturday (**14.05**) on the Information Point near gate number 1 at the PGE Narodowy.

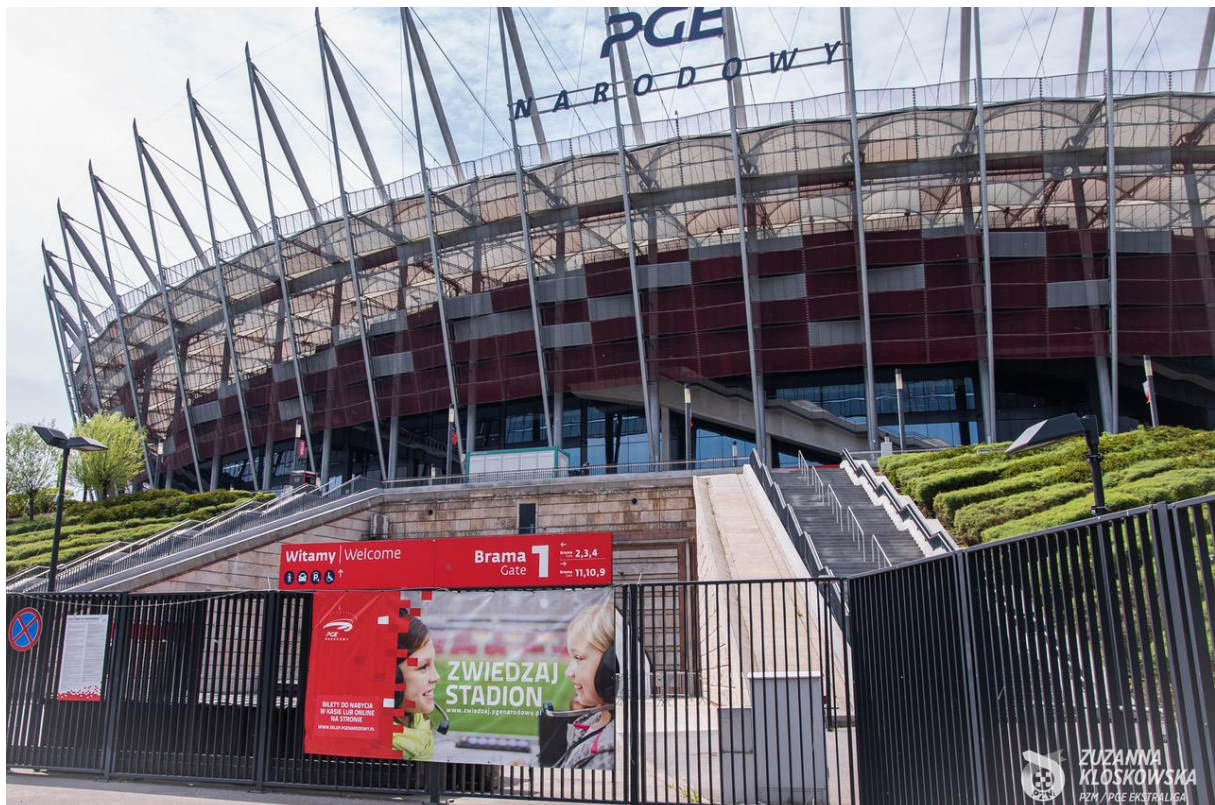
TICKET SALE for ORLEN Warsaw FIM Speedway Grand Prix of Poland will be conducted on Saturday (**14.05**) only by the Sale Point in the front of the gate number 2 at the PGE Narodowy.

SALE POINT in the front of the gate number 2 at the PGE Narodowy on Saturday (**14.05**) will be open from **1:00 pm** to **7:00 pm**.

OPENING OF THE PGE NARODOWY GATES: on Saturday (**14.05**) gates will be open at **5:00 pm**.

INFORMATION POINT will be placed near the gate number 1. Open from **5:00 pm** to **7:00 pm**.

FANZONE will be placed near gate number 1; open on Saturday from 2.30 pm to 6.30 pm.



- **Are kids allowed for free entrance at ORLEN Warsaw FIM Speedway Grand Prix of Poland?**

Children up to 6 years old, who were to enter the competition free of charge with an adult guardian in 2020 (the child sits on the guardian's lap) will be able to do so in 2022, but only in connection with guardian's ticket purchased for the competition in 2020.

For tickets purchased in 2022, the rule is that children up to 6 years old (the birth year) enter free of charge only with an adult guardian (the child sits on the guardian's lap) who has a ticket purchased in 2022.

- **Are there any deposits at the PGE Narodowy?**

Deposits at PGE Narodowy are next to gates number 2, 3, 10 and 11 (free, open from 5pm). Bags bigger than 25x25x25 cm will not be allowed at the PGE Narodowy.

- **Are tickets purchased for the original competition date in 2020 valid for the event?**

Yes, all tickets, including VIP GOLD, SILVER and PREMIUM tickets, as well as tickets entitling to watch the competition from the PGE Narodowy boxes, invitations and competition prizes from 2020, remain valid on the new competition date - May 14, 2022. They do not need to be replaced or otherwise authorized or confirmed.

- **What is included in the VIP Silver, VIP Gold and PREMIUM tickets?**

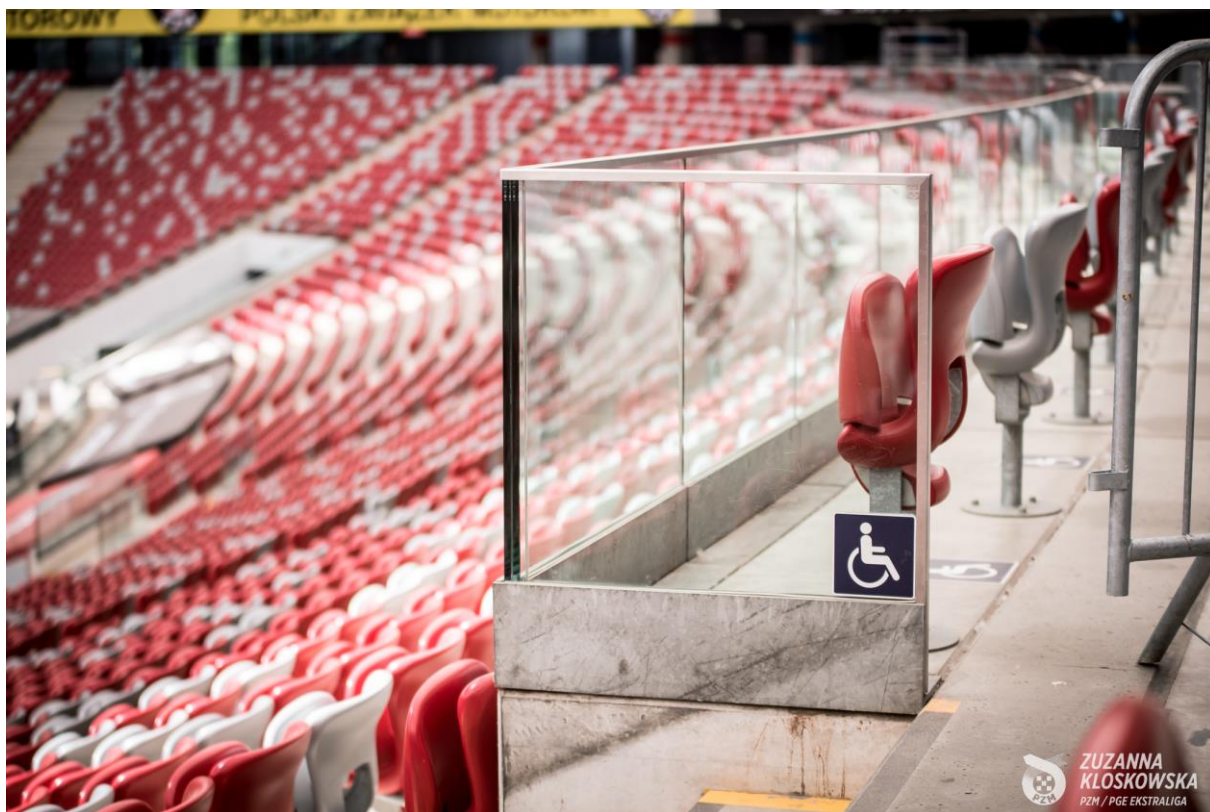
VIP Silver ticket price includes: seating place in VIP Silver zone (sectors C2 and C3), 5 hours catering (warm and cold buffet, appetizers, desserts) from 6 pm to 11 pm, unlimited Open Bar with alcohol and non-alcohol beverages, programme.

VIP Gold ticket price includes: seating place in VIP Gold zone (sectors V1, V2, V3, V4, V5) 5 hours catering (warm and cold buffet, appetizers, desserts) from 6 pm, to 11pm, unlimited Open Bar with alcohol and non-alcohol beverages, programme.

PREMIUM ticket includes: seating place in sectors C1 and C4 (a straight line opposite to the start) free programme (voucher) to collect on information point at the PGE Narodowy. Catering is not included.

- **How much are the tickets for people with disabilities, who require wheelchair?**

Disabled person, who use a wheelchair can purchase tickets in a row of places above sectors: D4, D5, D6, D7, D14, D15, D16, D17 (person who use a wheelchair + a guardian): 59 PLN + 1 PLN



- **How can I get more information about the tickets?**

There is a special hotline dedicated to tickets: +48 695 378 585 (for free), open from 10am to 4 pm (Monday-Friday)

PRZYSTANEK
ALEJA
ZIELENIECKA

STOP
ZIELENIECKA
AVENUE

P PŁATNY

P PŁATNY

METRO
STADION
NARODOWY

DWORZEC
WARSZAWA
STADION
RAILWAY
STATION

VIP SILVER

PRZYSTANEK
RONDO
WASZYNGTONA
STOP
WASHINGTON
ROUNDBOUT



BILETY
sprzedaż

PROGRAM
ZAWODÓW
sprzedaż

AL. ZIELENIECKA

INFOPUNKT
PROGRAMY
wymiana voucherów

PROGRAM
ZAWODÓW
sprzedaż

UL. RYSZARDA SIWCA



brama
gate 10

UL. WYBRZEŻE SZCZECIŃSKIE

VIP GOLD

i VIP
TYLKO AUTA!

AL. KS. J. PONIATOWSKIEGO

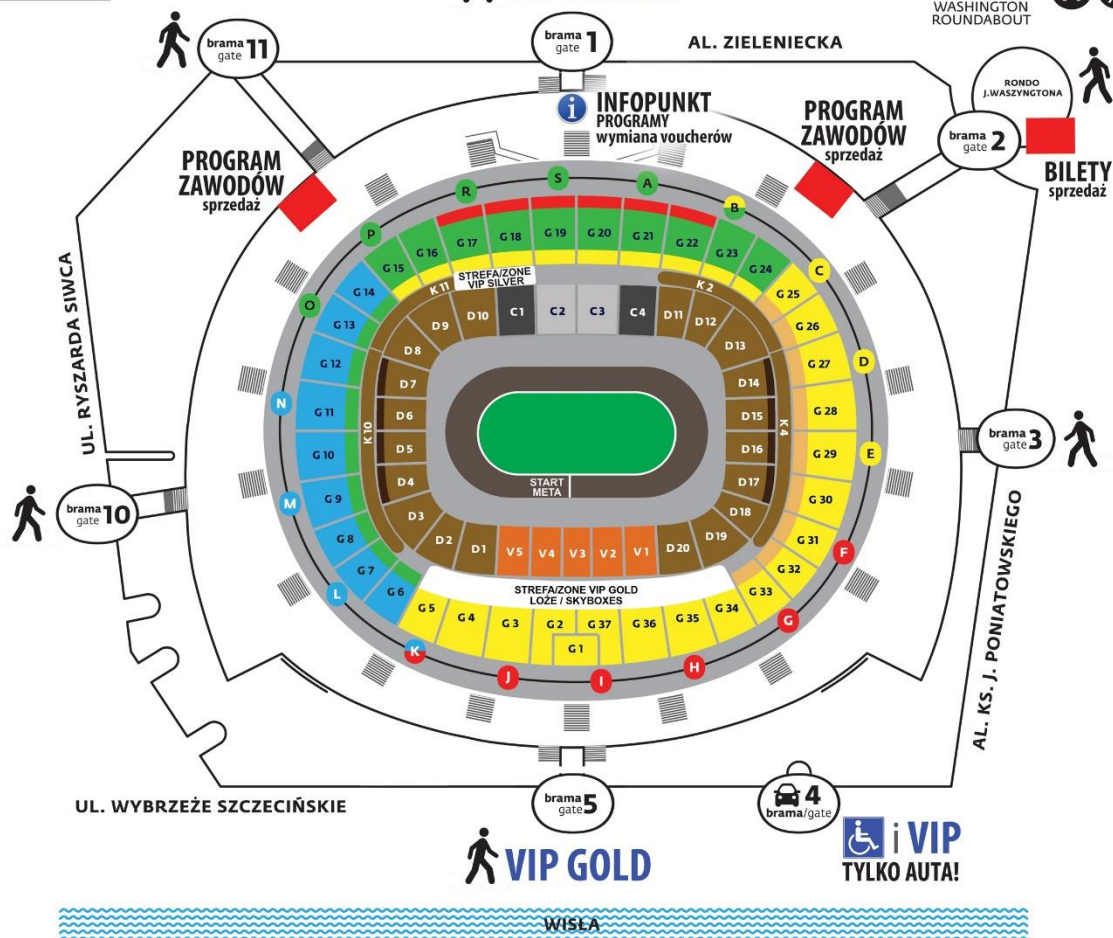


brama
gate 3

brama/gate 4

brama
gate 5

WISŁA



- **How to get to the PGE Narodowy?**

By car

PGE Narodowy is located at Aleja Księcia Poniatowskiego and Zieleniecka, Siwca, Wybrzeże Szczecińskie streets.

By bus

Rondo Waszyngtona stop bus lines: 102, 111, 117, 123, 128, 146, 147, 158, 166, 507, 509, 517, 521, N02, N22, N24 and N72

By tram

Rondo Waszyngtona stop, tram lines: 7, 8, 9, 22, 24, 45 and 77

By train

Warszawa Stadion station, trains SKM and Kolej Mazowiecka

By city bikes Veturilo:

Rondo Waszyngtona station – PGE Narodowy

Where can I park my car/bus?

OUTDOOR PARKING at the Błonia PGE Narodowy.

Tickets for outdoor parking during ORLEN Warsaw FIM Speedway Grand Prix of Poland are available at sklep.pgenarodowy.pl. We encourage to buy tickets by the Internet.

Prices of parking tickets bought by the Internet

motorcycle - 15 PLN

car - 25 PLN

small bus - 50 PLN

bus - 100 PLN

Entry / exit through the streets Targowa and Sokola. Parking will be open from 6am to midnight.

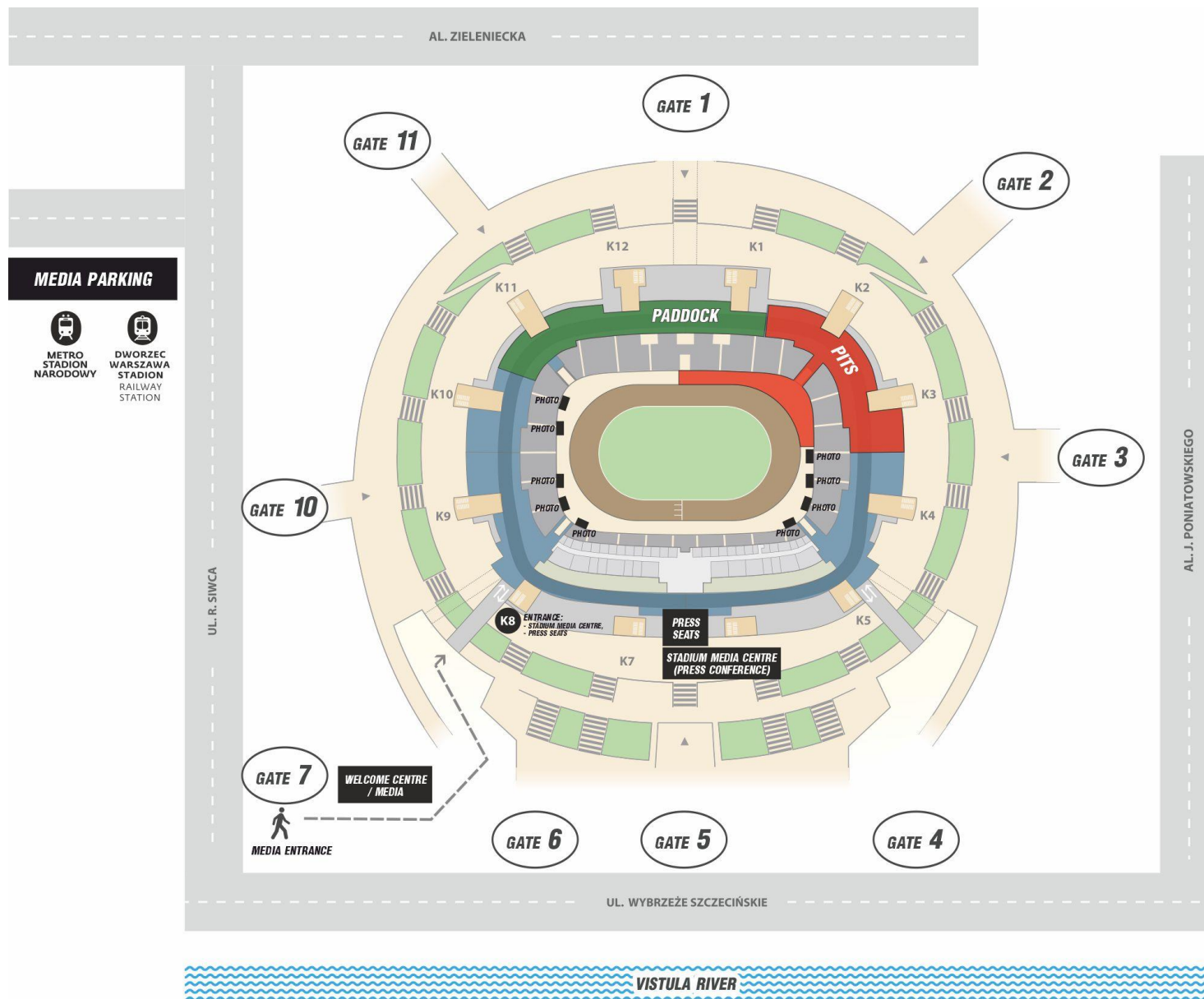
Prices of parking tickets bought directly at the parking on 14th of May:

- motorcycle - 25 PLN
- car - 35 PLN
- small bus - 60 PLN
- bus - 110 PLN

OTHER PARKINGS:

- **Parking next to the Palace of Culture and Science** (payable) - public. Everyone who pay for a ticket can leave their car on the parking. It is the easiest way to get to the PGE Narodowy.

- **Parking Park and Ride** - a parking system that allows free parking vehicles to people who at the time of departure from the parking lot provide a valid day pass or a longer period of validity ticket for local public transport



TICKETS SALE BY THE INTERNET

ORLEN WARSAW FIM SGP OF POLAND

- Where can I buy tickets to the ORLEN Warsaw FIM Speedway Grand Prix of Poland? <https://www.kupbilet.pl/sgp2022>



PROHIBITED ITEMS

ZABRONIONE PRZEDMIOTY / PROHIBITED ITEMS



Broń, materiały wybuchowe, noże - przedmioty, których można użyć jako broń / weapons, explosives, knives, anything that could be adapted for use as a weapon



Kaski, parasolki z ostrym zakończeniem / helmets, umbrellas with sharp points



Butelki, puszki, kubki, dzbanki, opakowania PET, szklane / bottles, cups, jugs, cans, objects made from PET, glass



Kominiarki / balaclavas



Materiały pirotechniczne / pyrotechnics



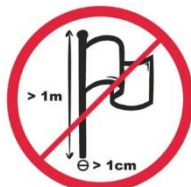
Napoje alkoholowe, narkotyki, substancje pobudzające, psychotropowe / alcohol drinks, drugs, stimulants or psychotropic substances



Materiały rasistowskie, ksenofobiczne, polityczne, religijne, propagandowe, prowokacyjne / political, religious, propaganda, provocative materials etc.



Wskaźniki laserowe / laser pointers



Masztły flagowe lub banerowe o większej długości niż 1 m, i średnicy niż 1 cm / flagpole max. 1m and Ø 1cm



Banery lub flagi o wymiarach większych niż 2.0 m x 1.5 m. / flag size max. 2.0 m x 1.5 m



Profesjonalne aparaty fotograficzne, kamery wideo / professional photo cameras, video cameras



Wuuzzele, trąbki, urządzenia emitujące dźwięk / wuuzelas, trumpets, devices emitting a sound



Zwierzęta / animals



Przedmioty, materiały komercyjne i promocyjne / promotional or commercial objects or materials



Gaz w aerozolu, substancje żrące, łatwopalne, barwniki / aerosol sprays, corrosive, flammable materials, colorants



Pilki sportowe, piłkowe, inne / Balls



Pudła, torby, plecaki, walizki i inne wszelkie przedmioty większe niż 25x25x25 cm / items larger than 25x25x25 cm



Rolki papieru, duże ilości papieru / paper rolls, large quantities of paper



Drony / Drones



ZAKAZ PALENIA NA STADIONIE

NO SMOKING AT THE STADIUM

POWYŻSZY WYKAZ NIE JEST WYCZERPUJĄCY.

W razie wątpliwości co do przedmiotu wnoszonego na teren imprezy masowej, odpowiedni członek służb informacyjnych i porządkowych jest odpowiedzialny za określenie przedmiotów niedozwolonych i dozwolonych.